



TORRENT ALLOYS & FITTINGS INC.

Torrent Alloys & Fittings Inc., based in Mumbai, India, is a prominent manufacturer and exporter specializing in butt-weld fittings in both seamless and welded forms. The company boasts an extensive product range that includes tees, elbows, and a variety of specialized fittings manufactured from a wide array of materials.

- **Specialized in Butt-weld Fittings**
- **Superior Quality Products**
- **Diverse Material Capabilities**
- **Global Market Reach**

TORRENT ALLOYS & FITTINGS INC.



Torrent Alloys & Fittings Inc., headquartered in Mumbai, India, is a distinguished leader in the manufacturing and export of high-quality butt-weld fittings. With a firm commitment to excellence, the company specializes in both seamless and welded forms of butt-weld fittings, catering to a diverse range of industrial needs.

Manufacturer



Torrent Alloys & Fittings Inc. prides itself on an extensive and versatile product portfolio. The primary manufacturing products include various types of tees and elbows, such as Equal and Unequal Tees, and 45°, 90°, and 180° Elbows available in both Long Radius (LR) and Short Radius (SR) configurations. Additionally, the company offers a wide array of specialty bends and fittings, including Hot Induction Bends, Piggable Bends, U Bends, Long Stub Ends, Short Stub Ends, Lap Joint Stub Ends, End Caps, and diverse pipe bends in dimensions ranging from 1D to 10D.

Understanding the critical nature of material quality in industrial applications, Torrent Alloys manufactures its products from a broad spectrum of materials. These include Stainless Steel, Carbon Steel, Duplex and Super Duplex Stainless Steel, Alloy Steel, Copper Nickel, and High Nickel Alloys. This extensive material capability ensures that the company can meet the specific needs of various industries, providing robust and reliable solutions.

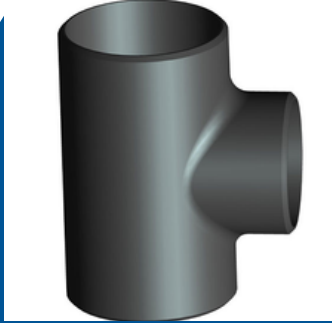
We are committed to delivering products that meet the highest standards of quality and reliability. The company's adherence to stringent quality control measures is underscored by its ISO 9001:2015 certification. This certification is a testament to the company's dedication to maintaining excellence in every aspect of its manufacturing process, from raw material selection to the final product delivery.

The butt-weld fittings produced by Torrent Alloys find extensive application across a wide range of industries. These include the oil and gas sector, petrochemical and chemical industries, power generation, shipbuilding, water treatment, pulp and paper industry, and the pharmaceutical sector. The company's products are designed to meet the demanding specifications and performance criteria required in these critical industries.

With a robust global distribution network, Torrent Alloys & Fittings Inc. has established itself as a preferred supplier in numerous international markets. The company's products are exported to key destinations such as the USA, UK, Oman, Saudi Arabia, UAE, Qatar, Peru, South Africa, and Sri Lanka. Particularly in the Gulf countries, Torrent has carved out a significant market presence, reinforcing its reputation as a reliable and trusted provider of high-quality butt-weld fittings.

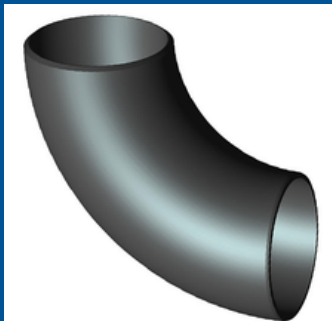
TOP-NOTCH QUALITY

PRODUCTS



Equal & Unequal Tee:

- ✓ Outside Diameter: SMLS (1/2"~24")
- ✓ Outside Diameter: ERW / Welded / Fabricated (1/2"~48")
- ✓ Wall Thickness: 3mm – 40mm / SCH5 to XXS
- ✓ ASME: ANSI B16.9, ANSI B16.28, MSS-SP-43
- ✓ DIN: DIN2605, DIN2615, DIN2616, DIN2617, DIN28011
- ✓ EN: EN10253-1, EN10253-2



45° Elbow, 90° Elbow & 180° Elbow:

- ✓ Outside Diameter: SMLS (1/2"~24")
- ✓ Outside Diameter: ERW / Welded / Fabricated (1/2"~48")
- ✓ Wall Thickness: 3mm – 40mm / SCH5 to XXS
- ✓ ASME: ANSI B16.9, ANSI B16.28, MSS-SP-43
- ✓ DIN: DIN2605, DIN2615, DIN2616, DIN2617, DIN28011
- ✓ EN: EN10253-1, EN10253-2
- ✓ Bending Radius: 1D, 1.5D, 3D, 5D, 10D

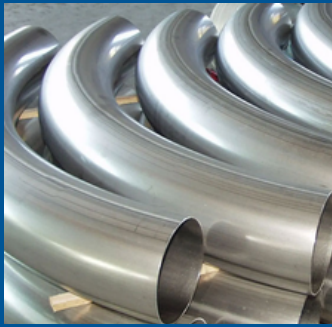


Stub Ends:

- ✓ Outside Diameter: 1/2"- 24"
- ✓ Wall Thickness: 2mm – 100mm / SCH5 to XXS
- ✓ ASME: ANSI B16.9, ANSI B16.28, MSS-SP-43
- ✓ DIN: DIN2605, DIN2615, DIN2616, DIN2617, DIN28011
- ✓ EN: EN10253-1, EN10253-2

TOP-NOTCH QUALITY

PRODUCTS



Pipe Bends:

- ✓ Outside Diameter: SMLS (1/2"~24")
- ✓ Outside Diameter: ERW / Welded / Fabricated (2"~36")
- ✓ Wall Thickness: 3mm – 40mm / SCH5 to XXS
- ✓ Bending Radius: 1D, 1.5D, 3D, 5D, 10D
- ✓ Product Angle: 0° – 180°
- ✓ ASME: ANSI B16.9, ANSI B16.28, MSS-SP-43
- ✓ DIN: DIN2605, DIN2615, DIN2616, DIN2617, DIN28011
- ✓ EN: EN10253-1, EN10253-2



End Caps:

- ✓ Outside Diameter: 1/2"- 48"
- ✓ Wall Thickness: 2mm – 40mm / SCH5 to XXS
- ✓ ASME: ANSI B16.9, ANSI B16.28, MSS-SP-43
- ✓ DIN: DIN2605, DIN2615, DIN2616, DIN2617, DIN28011
- ✓ EN: EN10253-1, EN10253-2



AVAILABLE GRADES MATERIALS



- **Stainless Steel**
- **Duplex Steel**
- **Super Duplex**
- **Carbon Steel**
- **Nickel Steel**
- **Monel Steel**
- **Inconel Steel**
- **Incoloy Steel**
- **Hastelloy Steel**
- **Cupro Nickel**
- **Alloy Steel**



LET'S WORK TOGETHER

+91 9920 663 346 

www.torrentalloys.com 

sales@torrentalloys.com 

Gala No. 1, Building No. F4, Jay Raj Complex, Vasai Road,
Kharbhav, Village Kalwar, Bhiwandi, Thane, Maharashtra, 421302. 